

ELKO EP, s.r.o.
 Palackého 493
 769 01 Holešov, Vsetuly
 Czech Republic
 Tel.: +420 573 514 211
 e-mail: elko@elkoep.com
 www.elkoep.com



CRM-82TO

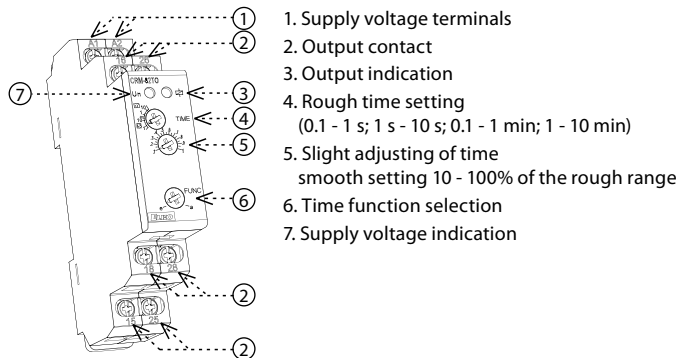
Delay OFF without supply voltage

02-77/2016 Rev.: 1

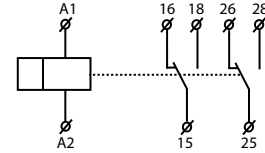
Characteristics

- „True OFF“ relay - relay timing without supply voltage
- example of use: back-up source for Delay OFF in case of voltage failure (e.g. emergency lighting, emergency respirator, or protection of el. controlled doors - in case of fire)
- 2 time functions adjustable by rotary switch:
 - a - delay OFF after disconnecting of supplying
 - e - delay ON
- time range (adjustable by rotary switch and slight setting by potentiometer):
0.1 s - 10 min
- universal supply voltage AC/DC 12 - 240 V
- interruptions in the power supply must take time steps (tens to hundreds of milliseconds)
- output contact: 2x changeover / DPDT 8 A
- output status indicated by LED (only in case of supply voltage connection)
- clamp terminals
- 1-MODULE, DIN rail mounting

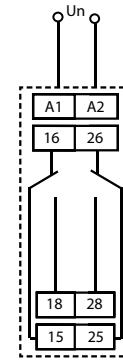
Description



Symbol



Connection



Type of load	$\cos \varphi \geq 0.95$	M	M	AC5a uncompensated	AC5a compensated	AC5b	AC6a	AC7b	AC12
Mat. contacts AgNi, contact 8A	250V / 8A	250V / 3A	250V / 2A	230V / 1.5A (345VA)	x	300W	x	250V / 1A	250V / 1A
Type of load	AC13	AC14	AC15	DC1	DC3	DC5	DC12	DC13	DC14
Mat. contacts AgNi, contact 8A	x	250V / 3A	250V / 3A	24V / 8A	24V / 3A	24V / 2A	24V / 8A	24V / 2A	x

CRM-82TO

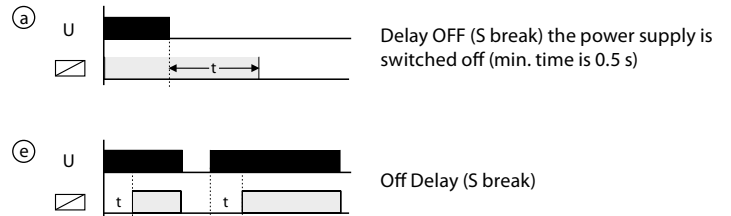
Number of functions:	a - On Delay (Power On) / e - Off Delay (S Break)
Supply terminals:	A1 - A2
Voltage range:	AC/DC 12 - 240 V (AC 50 - 60 Hz)
Burden:	AC 0.7 - 3 VA / DC 0.5 - 1.7 W
Supply voltage tolerance:	-15 %; +10 %
Supply indication:	green LED
Time ranges:	0.1 s - 10 min
Time setting:	potentiometer
Time deviation:	5 % - mechanical setting
Repeat accuracy:	0.2 % - set value stability
Temperature coefficient:	0.1 % / °C, at = 20 °C (0.1 % / °F, at = 68 °F)

Output

Number of contacts:	2x changeover / SPDT (AgNi / Silver Alloy)
Current rating:	8 A / AC1
Breaking capacity:	2000 VA / AC1, 192 W / DC
Inrush current:	10 A / < 3 s
Switching voltage:	250 V AC1 / 24 V DC
Output indication:	red LED
Mechanical life:	3x10 ⁷
Electrical life (AC1):	0.7x10 ⁵

Other information

Operating temperature:	-20 °C to +55 °C (-4 °F to 131 °F)
Storage temperature:	-30 °C to +70 °C (-22 °F to 158 °F)
Electrical strength:	4 kV (supply-output)
Operating position:	any
Mounting:	DIN rail EN 60715
Protection degree:	IP40 from front panel / IP10 terminals
Overvoltage category:	III.
Pollution degree:	2
Max. cable size (mm ²):	solid wire max. 2x 2.5 or 1x 4 / with sleeve max. 2x 1.5 or 1x 2.5 (AWG 12)
Dimensions:	90 x 17.6 x 64 mm (3.5" x 0.7" x 2.5")
Weight:	93 g (3.3 oz.)
Standards:	EN 61812-1, EN 61010-1



More accurate setting of timing for long periods of time

Example of time setting to 8 hours period:

For rough setting use time scale 1 - 10 s on the potentiometer.

For fine time setting aim for 8 s on potentiometer, then recheck accuracy (using stopwatch etc).

On rough time setting, set potentiometer to originally desired scale 1 - 10 hours, leave a fine setting as it is.

Warning

Device is constructed for connection in 1-phase main alternating current voltage and must be installed according to norms valid in the state of application. Connection according to the details in this direction. Installation, connection, setting and servicing should be installed by qualified electrician staff only, who has learnt these instruction and functions of the device. This device contains protection against overvoltage peaks and disturbances in supply. For correct function of the protection of this device there must be suitable protections of higher degree (A, B, C) installed in front of them. According to standards elimination of disturbances must be ensured. Before installation the main switch must be in position "OFF" and the device should be de-energized. Don't install the device to sources of excessive electro-magnetic interference. By correct installation ensure ideal air circulation so in case of permanent operation and higher ambient temperature the maximal operating temperature of the device is not exceeded. For installation and setting use screw-driver cca 2 mm. The device is fully-electronic - installation should be carried out according to this fact. Non-problematic function depends also on the way of transportation, storing and handling. In case of any signs of destruction, deformation, non-function or missing part, don't install and claim at your seller it is possible to dismount the device after its lifetime, recycle, or store in protective dump.