



For punched or drilled metal sheets

Edge protection grommets

Edge protection grommets are used wherever cable and wires are routed through apertures. HellermannTyton grommets offer excellent mechanical protection.

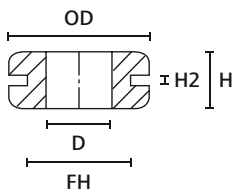
Features and benefits

- Protects cables from sharp edges
- Provides additional strain relief
- Flexible and easy to apply
- High resistance to chemicals and environmental influences

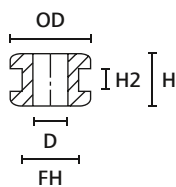


Edge protection grommets.

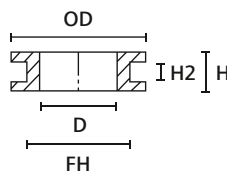
MATERIAL	Polyvinylchloride (PVC)	Polyvinylchloride, flame retardant (PVC-FR)
Operating Temperature	-30 °C to +60 °C	
Shore Hardness A	70±5	55±5
Flammability	UL 94 HB	UL 94 V0



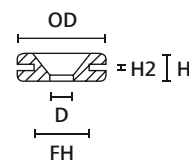
HV1101



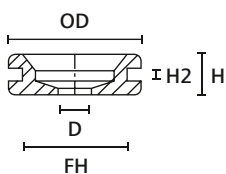
HV1201 to HV1218



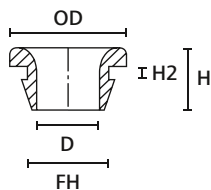
HV1301 to HV1305



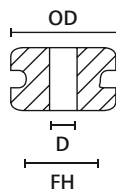
HV1401



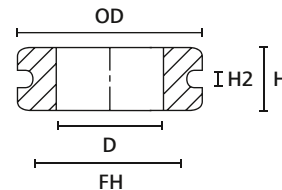
HV1402



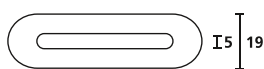
HV1502 to OP1503



HV1606 to HV1608



HV1606 to HV1608



HV1606 to HV1608



For punched or drilled metal sheets

Edge protection grommets

TYPE	Drawing	Outside Ø (OD)	Hole Ø (FH)	Ø (D)	Height (H)	Height (H2)	Material	Colour	Pack Cont.	Article-No.	
HV1101		25.5	19.0	12.0	10.0	1.6	PVC-FR	Black (BK)	500 pcs.	633-01010	
HV1212		9.0	6.0	4.0	7.0	1.0	PVC-FR	Black (BK)	2,000 pcs.	633-02120	
HV1201		9.5	6.4	4.0	5.6	1.6	PVC-FR	Black (BK)	2,000 pcs.	633-02010	
HV1201B		9.5	6.4	4.0	6.5	2.5	PVC-FR	Black (BK)	2,000 pcs.	633-02020	
HV1215		10.0	8.0	6.0	5.0	1.0	PVC-FR	Black (BK)	2,000 pcs.	633-02150	
HV1209		11.0	9.0	4.0	5.5	1.5	PVC-FR	Black (BK)	1,000 pcs.	633-02090	
HV1208		14.0	9.5	8.0	8.0	1.5	PVC-FR	Black (BK)	1,000 pcs.	633-02080	
HV1207			14.0	10.0	6.0	6.4	1.5	PVC-FR	Black (BK)	1,000 pcs.	633-02070
HV1218			14.0	10.0	6.0	9.0	4.0	PVC-FR	Black (BK)	1,000 pcs.	633-02180
HV1216			14.5	8.0	5.0	6.5	1.5	PVC-FR	Black (BK)	2,000 pcs.	633-02160
HV1210			15.0	9.0	6.0	10.5	2.0	PVC-FR	Black (BK)	1,000 pcs.	633-02100
HV1203			17.5	12.0	10.0	6.8	2.0	PVC-FR	Black (BK)	1,000 pcs.	633-02030
HV1204			17.5	12.0	10.0	8.8	4.0	PVC-FR	Black (BK)	1,000 pcs.	633-02040
HV1206			17.5	12.0	10.0	10.8	6.0	PVC-FR	Black (BK)	1,000 pcs.	633-02060
HV1205			17.5	13.5	10.0	8.7	4.0	PVC-FR	Black (BK)	1,000 pcs.	633-02050
HV1303			15.9	11.0	8.0	6.4	1.6	PVC-FR	Black (BK)	1,000 pcs.	633-03030
HV1301			15.9	11.0	8.0	7.0	1.0	PVC-FR	Black (BK)	1,000 pcs.	633-03010
HV1302		15.9	11.0	8.0	9.0	3.0	PVC-FR	Black (BK)	1,000 pcs.	633-03020	
HV1304		15.9	11.0	8.0	10.8	6.0	PVC-FR	Black (BK)	1,000 pcs.	633-03040	
HV1305		24.0	18.0	14.0	7.0	3.0	PVC-FR	Black (BK)	500 pcs.	633-03050	
	24.0	18.0	14.0	7.0	3.0	PVC-FR	White (WH)	500 pcs.	633-03059		
HV1401		15.9	9.5	5.0	4.8	0.8	PVC-FR	Black (BK)	1,000 pcs.	633-04010	
HV1402		23.0	18.5	6.0	7.0	2.0	PVC-FR	Black (BK)	1,000 pcs.	633-04020	
HV1502		11.5	8.0	6.5	8.0	1.5	PVC	Black (BK)	2,000 pcs.	633-05020	
HV1606		31.0	25.0	17.0	11.0	3.0	PVC-FR	Grey (GY)	500 pcs.	633-06068	
HV1607		43.0	37.0	29.0	11.0	3.0	PVC-FR	Grey (GY)	250 pcs.	633-06078	
HV1608		58.0	52.0	44.0	11.0	3.0	PVC-FR	Grey (GY)	250 pcs.	633-06088	

All dimensions in mm. Subject to technical changes.



Add items to your watchlist!

www.HT.click/9-391